

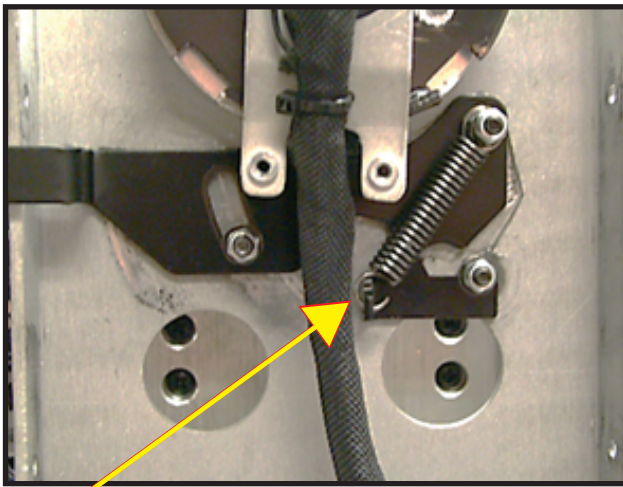


Replacing the Tilt Lock Mechanism

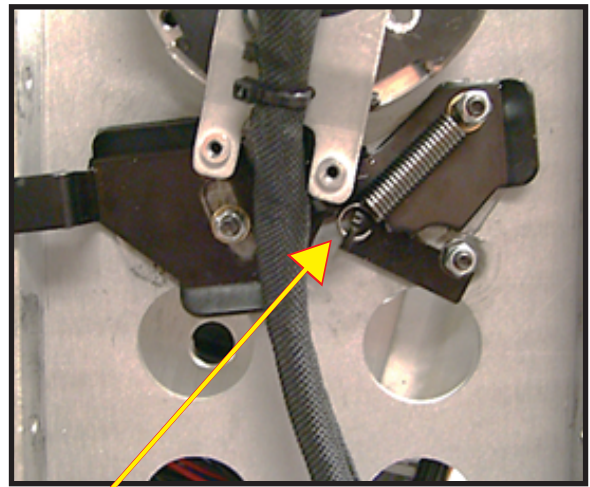
If the fixture tilt lock is damaged due to accidental rough handling, it can cause the lock to engage itself. This will require replacing the tilt lock mechanism. Order a replacement tilt lock mechanism (part number - H7140006).

Tools Required:

- Phillips screwdriver
- Needle-nose pliers
- Right-angle Phillips head wrench
- 7 mm nut driver



CORRECT



INCORRECT



CAUTION:



Wear proper eye protection.

1. Using a Philips screwdriver, remove the fixture head covers and all yoke arm covers.



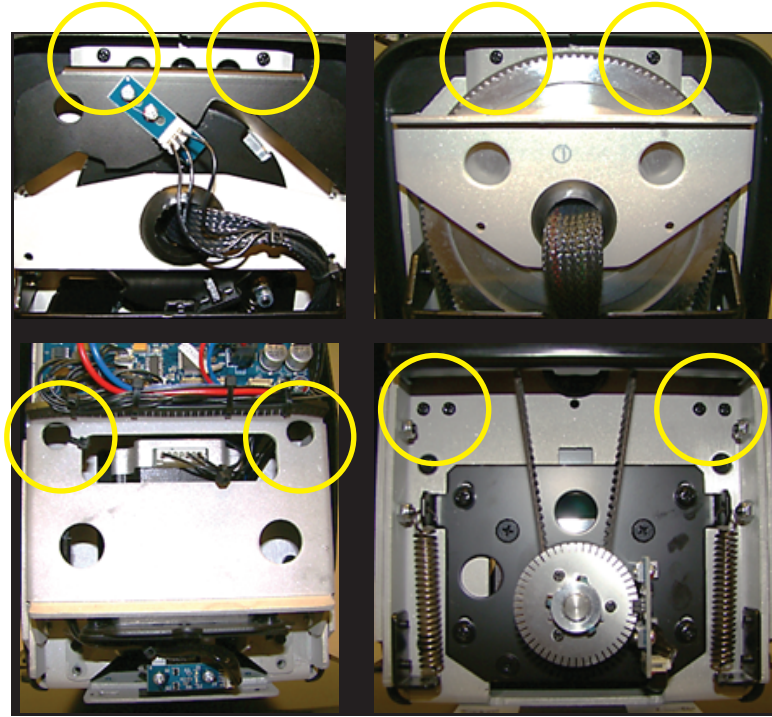
(Cont.)



SERVICE BULLETIN

Sola Tilt Lock Replacement

Remove the Inner Yoke Arm Covers



CAUTION:



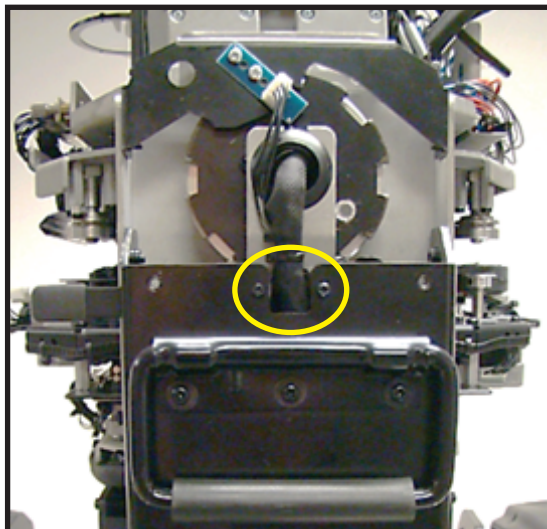
Wear proper eye protection.



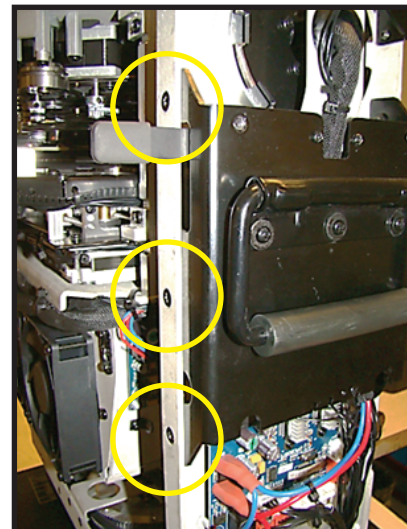
Remove the Handle Bracket

1. Remove the two (2) Phillips screws from harness strain relief.
2. Remove the three (3) Phillips screws from each side of the yoke (6 total).

1



2



(Cont.)



SERVICE BULLETIN

Sola Tilt Lock Replacement

Remove the Damaged Tilt Lock Mechanism

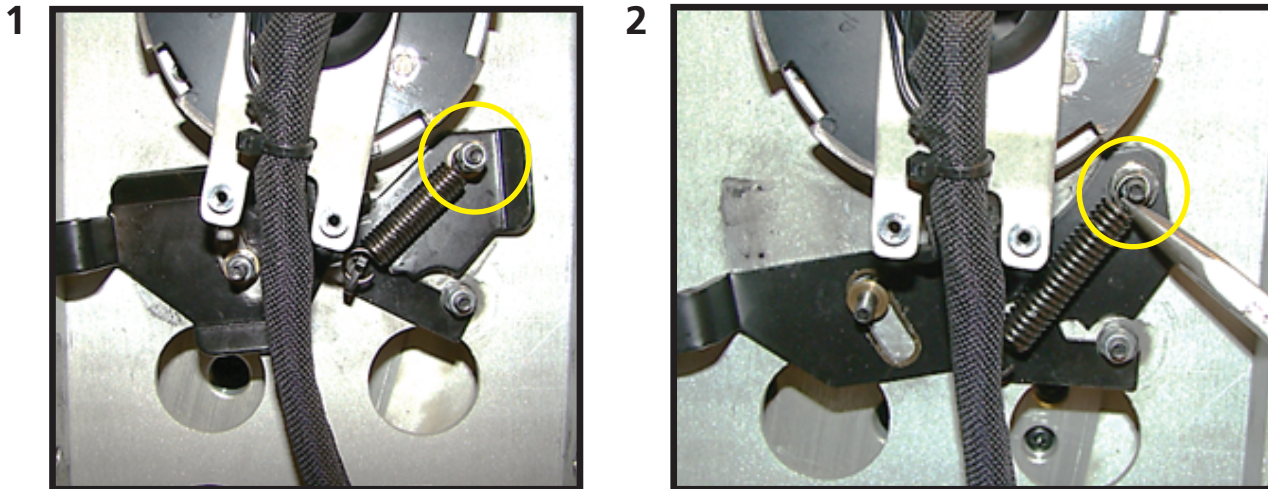


CAUTION:

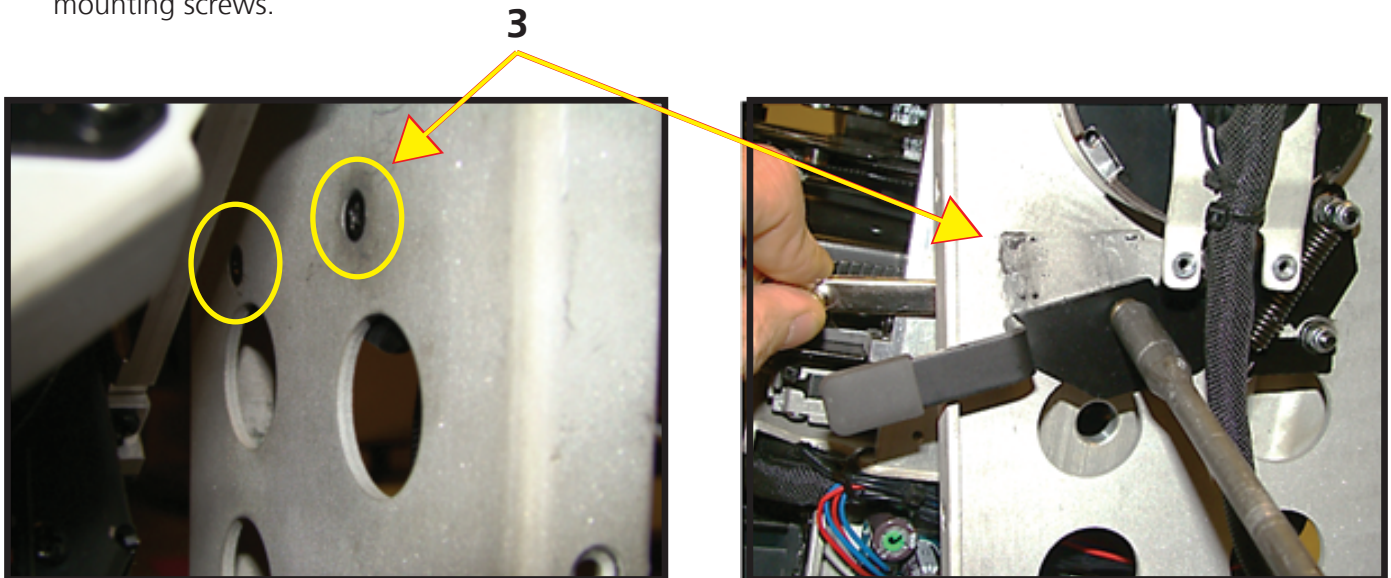


Wear proper eye protection.

1. Remove the nyloc nut shown using a 7 mm nut driver.
2. Carefully remove the tilt lock spring using needle-nose pliers.



3. Using a 7 mm nut driver and a right-angle Phillips head wrench, remove the two (2) inner yoke tilt lock mounting screws.



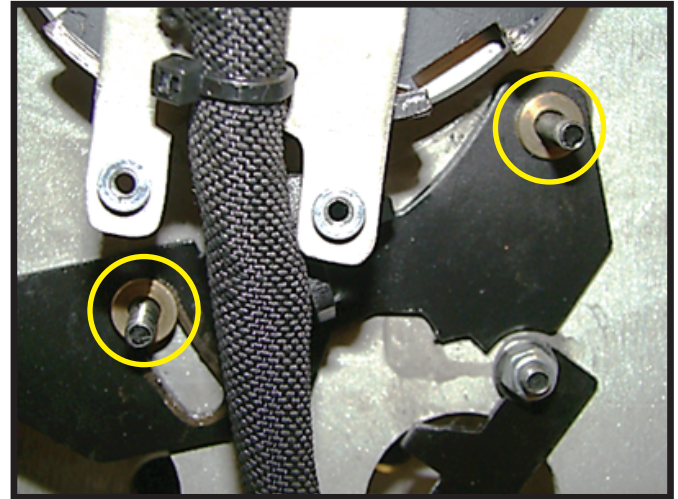
(Cont.)



SERVICE BULLETIN

Sola Tilt Lock Replacement

4. Remove the two (2) brass spacers.



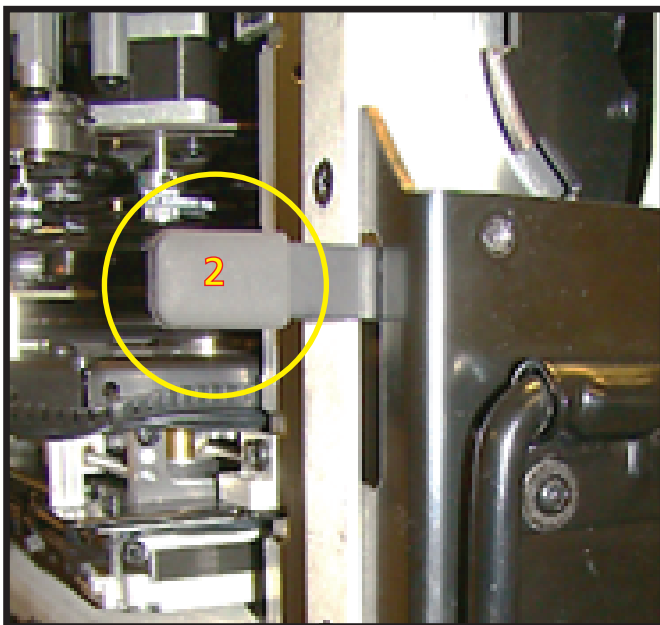
Install the New Tilt Lock Mechanism

1. Install the new tilt lock mechanism in the reverse order of the removal. Review the previous sections.



CAUTION:

Do not over-tighten the nyloc nuts. Test to ensure that the tilt lock moves freely with little effort. If it is difficult to move, loosen the nyloc nuts one 1/4 turn at a time until it operates freely.



2. Remove the rubber handle sleeve from the damaged tilt lock mechanism and slide onto the handle of the newly install tilt lock mechanism handle.

For further information or technical assistance, please contact customer service directly, or e-mail - support@highend.com

High End Systems
2105 Gracy Farms Lane
Austin, TX 78758 USA

Office and Customer Service: 512-836-2242
Fax: 512-837-5290
Toll Free: 800-890-8989